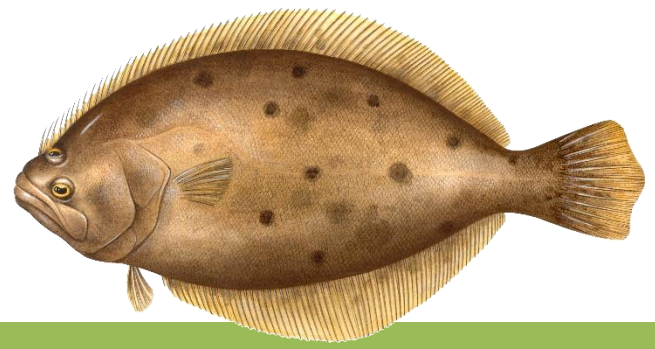


CT DEEP **2017**
FISHING REPORT NUMBER 6
5/18/2017



Summer Flounder or Fluke (*Paralichthys dentatus*)



YOU CAN FIND US DIRECTLY ON FACEBOOK. This page features a variety of information on fishing, hunting, and wildlife watching in Connecticut. The address is www.facebook.com/CTFishandWildlife.

SHARE THE EXPERIENCE
Take someone fishing

INLAND REPORT

DEEP'S 2017 IN-SEASON SPRING TROUT STOCKINGS NEARING COMPLETION.

TROUT- RIVERS & STREAMS - Plenty of trout have been stocked and are waiting for anglers. Hatches are in full swing thanks to this 2-day burst of record warmth. Hendricksons are out on the Housatonic and Farmington rivers (flows are however on the high side at both rivers). Light Cahills, midges, ants and of course BWO's are still working. Streamers are doing better than nymphing, the usual suspects, including Black Ghost, Slim Jim, Copper Johns and Hare's Ears are working.

Farmington River – Flies are hatching and trout fever is in full swing. The weekend looks ideal for the Farmington with flows are about normal (447 CFS at Riverton plus an additional 166 CFS from the Still River). Water temperatures are on the increase now in the mid 50's.

Hatches/patterns. Fish are rising with the boost in insect activity in response to the super warm days mid-week. Typical go-to flies this time of year include Blue Wing Olive, Hendrickson (now ranging from Unionville up to the upper end of the year-round catch-and-release area), Winter/Summer Caddis, Pheasant Tails, Hares Ears, Stonefly nymphs, Midge and Blue Quill. Nymphs (#18-22) are always a good go-to fly, try Bead Head, Midge Pupa, Brassie, Zebra Midge or Copper John patterns. Streamers are also a good option (White Zonkers & Buggers (#4-12) as well as Muddlers, Grey or Black Ghost).

Housatonic River – Flows are still higher (currently 1,960 CFS at Falls Village and 3,090 CFS at Gaylordsville) than typical mid-May levels but good fishing can be found throughout. Anglers can call FirstLight Power Resources at 1-888-417-4837 or check the USGS website (<http://waterdata.usgs.gov/ct/nwis/current/?type=flow>) for updated Housatonic River flow information (and also check with a local bait & tackle shop). Morning water temperatures are currently in the low to mid 50's °F.

COME TAKE A TOUR OF THE RAINBOW FISHWAY- See migrating fish in the underground viewing window.

PLAN NOW - DEEP's ANNUAL OPEN HOUSE AT THE RAINBOW FISHWAY is Saturday, May 20, from 10:00 am until 3:00 pm. The public is invited to visit the fishway and learn about both it and the fish it passes. During this day, the public can tour the facility and are encouraged to go downstairs and check out the underground viewing window. Shad, lamprey and Atlantic salmon may be seen passing upstream. Staff will be on hand to answer questions. This is a **GREAT ACTIVITY FOR FAMILIES**, and there is no fee. *Directions can be found on at the end of the Inland Report section.*

Hatches/patterns. Hendriksons are on the river. As well as the typical May go-to; Black Caddis (#10-12) March Brown (#10-12), Pheasant Tail (#12-18), Stoneflies (#6-10), Pheasant Tails (#14-20), and Black Stoneflies (#18-22). Nymphing (try Bead Head, Midge Pupa or Copper Johns) and streamers (such as White/Yellow Zonkers or Wooly Buggers) are good options for fishing the current flows.

RIVERS AND STREAMS STOCKING UPDATE (Note that all stocking schedules are subject to change):

In **eastern Connecticut** the **Hammonasset River** (including the **TMA**), **Coginchaug River**, **Pachaug River**, **Natchaug River**, **Shunock Brook**, **Salmon River** (including the **TMA**), **Blackledge River**, **Five Mile River** **Scantic River** (upper & lower sections), **Quinebaug River**, **Shetucket River**, and the **Moosup River** (the river upstream from the TMA).

In **western Connecticut**; **Farm River** (lower), **Norwalk River** (Merwin Meadows area).

TROUT-LAKES & PONDS – Decent action was found at Candlewood Lake (good reports from near Lattins Cove, nothing big but lots of stockie-size fish) and Saugatuck Reservoir, fair at East Twin Lake and Crystal Lake, and spotty at Highland Lake and Beach Pond. Night electrofishing surveys turned up lots of trout in both the Congamond Lake (Suffield) and Mashapaug Lake (Union).

LAKES AND PONDS STOCKING UPDATE (Note that all stocking schedules are subject to change):

In **eastern Connecticut**; **Quonnipaug Lake**

In **western Connecticut**; **East Twin Lake**, **Highland Lake**, **Wononskopomuc Lake**

TROUT PARKS: The **Chatfield Hollow** (brook and pond), **Mohegan Park Pond**, and **Natchaug River Trout Parks** have been stocked so far this week.

COMMUNITY FISHING WATERS: **Mirror Lake** (Hubbard Park Pond) was stocked.



INTERACTIVE TROUT STOCKING MAP NOW AVAILABLE.

Anglers can find more information on trout stocking online. A list of the waters that were dropped from this year's stocking schedule is on our webpage at: www.ct.gov/deep/fishing, along with an interactive trout stocking map (www.ct.gov/deep/troutstockingmaps) that anglers should find very useful for planning their next outing. The new application (mobile friendly) provides the number of days since the last stocking at each of our stocked waters enabling anglers to search for their favorite waterbody or by that have been recently stocked.

LARGEMOUTH BASS fishing is good, with more consistent action reported. Fish are on beds in most areas, and water temperatures are warming nicely. **Tournament angler** reports are from Beseck Lake (fair to good fishing, 5.12 lb lunger), Amos Lake (fair action, but good-size fish, averaging 2.5 lbs apiece with a 4.13 lb lunger), Lake of Isles (fair action, 4.1 lb lunger but not much size otherwise), Pachaug Pond (slow to fair action, with a 3.45 lb lunger), Quaddick Lake (good fishing, with 5.20 lb and 4.26 lb lunkers for one club and a 6.7 lb lunger for another club),

Candlewood Lake (good, anglers are finding some 4-6 lb bass, lunkers include 6.64 lb, 6.22 lb, 5.94 lb, 5.27 lb, and 4.87 lb lunkers), Lake McDonough (fair to good, with a 2.64 lb lunker) and Bantam Lake (tough for many, with a 4.11 lb lunker).

SMALLMOUTH BASS. Smallmouth are providing some action, with good to very good reports from Candlewood Lake (lots of 3-5 lb smallies, tubes, Keitech swim baits and drop shots are having success at times) and fair reports from Lake McDonough and Highland Lake. **Tournament angler** reports are from Candlewood Lake (slowing a bit, but still good to very good for many, 3.35 lb lunker,), Lake McDonough (slow for smallies, with a 1.7 lb lunker), and Colebrook River Lake (slow to fair action).

WALLEYE & NORTHERN PIKE. Hard to get with very sparse action reported.

CHAIN PICKEREL. Good reports from just about everywhere (even rivers) Bashan Lake, with fish up to 2.5 lbs being caught, and a number of other lakes and ponds, especially in southeastern parts of the state.

COMMON CARP fishing remains good in Batterson Park Pond, Lake Zoar, Lake Lillionah, Quinebaug River and Aspinook Pond.

BLACK CRAPPIE are becoming more aggressive hitting small Rapala and small jigs. Look for a "slab" at your favorite fishing hole. Some really nice crappie are reported from Candlewood Lake

CONNECTICUT RIVER

Flows have dropped (although still above typical mid-May levels) and are slowly clearing. Water temperatures remain cool. **AMERICAN SHAD** can be found throughout the river with variable action reported (some times of slow action, and some times of good action reported). Willow leaves have been working. Some **STRIPED BASS** (schoolie-size and a few bigger fish) are being found throughout the river, but best action is in the lower portions. White Slugo (9 inches) were providing solid topwater action during rough surface conditions near the mouth. **LARGEMOUTH BASS** are providing some action in the coves from just below Hartford to Haddam. **CHANNEL CATFISH** are providing some solid action in the Connecticut River and Salmon River cove. Cut bait or live 4-5" shiners are working.



ZEBRA MUSSELS REMINDER

Zebra mussels are now found in a number of locations scattered throughout the Housatonic River and its impoundments including Lake Lillinonah (since 2010), Lake Zoar (since 2010) and Lake Housatonic (since 2011).

Prior to their discovery in Lakes Lillinonah and Zoar in 2010, zebra mussels had been found (1998) in CT only in East Twin Lake and West Twin Lake (Salisbury). Anglers fishing in any of these waters and western Connecticut in general **should use extra care to avoid transporting water, aquatic vegetation, and possibly zebra mussels to new locations.** Information

For more information including precautions that should be taken to prevent the spread of zebra mussels to additional waters, visit www.ct.gov/deep/invasivespecies or the Aquatic Invasive species section of the 2017 CT angler's Guide (www.ct.gov/deep/anglersguide).

Directions to Rainbow Fishway:

From Rt. I-91, take exit 40 to Rt.20 (Bradley Airport Exit). Travel west to the Hamilton South exit. At the end of the exit ramp turn left. Turn right at the first intersection on to Rainbow Road. The fishway is on the left about a quarter of a mile down the road. Look for a cyclone fence and a brown sign with yellow lettering.

From Rt.20 East (traveling toward I-91), go past the exit for Bradley Airport and take the Hamilton exit. At the end of the exit ramp turn right. Turn right at the first intersection on to Rainbow Road. The fishway is on the left about a quarter of a mile down the road. Look for a cyclone fence and a brown sign with yellow lettering.

NOTES & NOTICES:

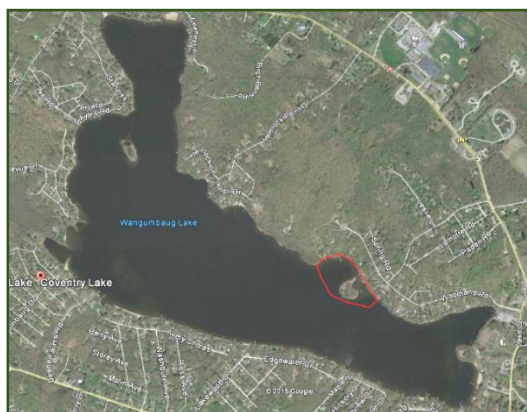
LOWER BOLTON LAKE-(sailboat regatta). A sail boat regatta is scheduled for **Sunday, May 21** from **9:00 am to 4:00 pm** in the central area of the lake. Boaters should extra care on the lake.

BRANFORD RIVER (boat launch). The Branford River state boat launch continues to be closed for renovations. Alternative nearby launch sites include the Guilford Town boat launch and the East River State boat launch, both in Guilford.

CONNECTICUT RIVER (invasive species alert). Hydrilla was recently found in the main stem Connecticut River in Glastonbury (near Glastonbury's Riverfront Park & Boathouse). See the Coventry Lake entry below for what river users should do to prevent spread of this invasive plant to other waterbodies.

COVENTRY LAKE (invasive species alert). Hydrilla, a very highly invasive aquatic plant, has been found growing in Coventry Lake. All lake users should take extra care to check and clean their boats (including canoes, kayaks and rowing sculls), trailers, and fishing equipment before leaving the boat launch, or leaving the lakeshore.

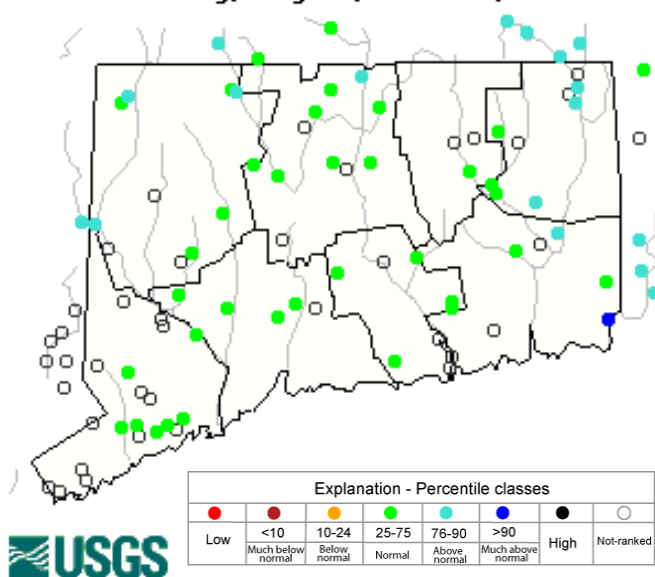
Coventry Lake (Wangumbaug Lake) boaters should avoid the area outlined in red to avoid fragmenting and spreading hydrilla. This is only area in the lake where hydrilla has been found.



GLASGO POND (drawdown). Glasgo Pond has refilled, however the state boat launch remains closed until all work is completed.

STREAM FLOW CONDITIONS

Thursday, May 18, 2017 14:30ET



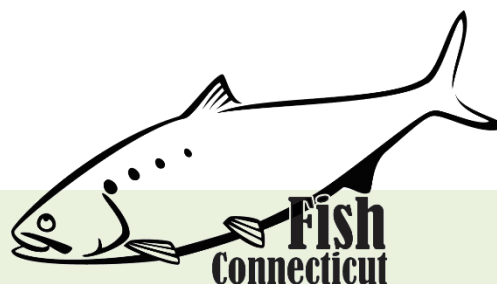
Data in the state graphic to the left are generated by the United States Geologic Survey (USGS) and are available on line at: <http://waterdata.usgs.gov/ct/nwis/rt>. A percentile is a value on a scale of one hundred that indicates the percent of data in the data set equal to or below it. For example streamflow greater than the 75th percentile means only ¼ of the streamflow values were above the value and thus would be considered "above normal". Stream flow between the 25th and 50th are considered to be "normal flows" and those 25th or less are considered to be "below normal".

TROPHY FISH AWARD PROGRAM:

DEEP's [Trophy Fish Award Program](#) recognizes angler skill by awarding a bronze pin for your first trophy fish, a silver pin for your fifth trophy fish, and a gold pin for your tenth trophy fish. Angler of the year is awarded at our annual Trophy Fish Award Ceremony.

To see if your fish qualifies check out the criteria on page 13 of the [Angler's Guide](#). If you have caught a trophy fish be sure to fill out the affidavit (page 12 of the Angler's Guide) and submit the required photo(s) and form to us. Good luck!

MARINE FISHING REPORT



Surface water temperatures in Long Island Sound (LIS) are in the low to mid 50's °F. Check out the following web sites for more detailed water temperatures and marine boating conditions:

<http://www.mysound.uconn.edu/stationstat.html>

http://marine.rutgers.edu/mrs/sat_data/?nothumbs=1

<http://www.ndbc.noaa.gov/>

<http://www.wunderground.com/MAR/AN/330.html>

Connecticut State Boundary Line in Long Island Sound. Anglers please note: Though Connecticut has reciprocity with neighboring states (New York, Rhode Island, Maine and Massachusetts), residents of Connecticut are required to have a CT Resident Marine Waters or All Waters Sport Fishing License to fish in the Marine District.

STRIPED BASS fishing continue to be good around the Full "Flower" Moon in all of the tidal rivers along the Connecticut shoreline. There are also some very big keepers (49 pound cow bass Norwalk and Stonington) in the mix as well. Striper spots include the Pawcatuck River, Mystic River, Thames River, Niantic River, lower Connecticut River (DEEP Marine Headquarters fishing pier and Dock and Dine), Black Hall River, New Haven Harbor (Sandy Point), Housatonic River and Norwalk Harbor including the islands. Sand and blood worms have been working the best, especially in turbid waters around the high tide and the beginning of the ebb. Casting swimming lures, small jigs (Chartreuse color) with twister tails, soft baits, and Kastmasters and other metal lures will all work. Fishing is awesome in the lower rivers/estuaries where the water temperature has approached the magical 55°F mark and there are schools of menhaden! The top-water fishing with has been fantastic with a 9" white slug.

SUMMER FLOUNDER (fluke) fishing is good overall and quickly improving. As squid enter Long Island Sound...fishing will only get better. Mid to western LIS anglers reported fluke from 3 to 7 lbs being common. Anglers targeting fluke report that skates and searobins appear to be in plentiful supply. Fluke spots include the typical locations: south shore of Fishers Island (Isabella Beach, Wilderness Point), Napatree Point and along the beach, off the Stonington breakwater, mouth of the Mystic River to Groton Long Point, Thames River channel, Two Tree Island Channel, Black Point/Niantic Bay/River, Long Sand Shoal, Westbrook-Clinton area, Falkner Island area, West Haven to Woodmont, New Haven Harbor including by the breakwaters, off the mouth of the Housatonic River, and around the Norwalk Islands. Since squid are coming in, offering a live one on the bottom (10-40 feet) would be a good move for catching that big slab

“doormat” fluke! Try drifting with a white or pink Bucktail Jig and attach a Berkely 3”- 4” Gulp Mullet in chartreuse, white or pink color. Fresh squid and or silversides (spearing) have also been producing. **Minimum size is 19 inches and the daily creel limit is 3 fish per person.** fishing season opens May 17 to September 21. Time to get the boat, and fishing gear ready for some phenomenal early season fluke fishing. [CT Bait & Tackleshop List](#)

SHORE FISHING SPOTS & TIDE TABLE INFORMATION

To find a saltwater shore fishing spot close to where you live, go to the following website:

<http://www.lisrc.uconn.edu/coastalaccess/>.

For **Enhanced Opportunity Shore Fishing** sites and other fishing information including a site map go to the following website

<http://www.depdata.ct.gov/maps/saltwaterfish/map.htm>.

Please see page 64 of the [2017 CT Angler’s Guide](#) for CT tide information.

BLACK SEA BASS fishing is slow. The early season hot spot is Falkner Island. Fishing over any deep water structure in 60 to 100 ft around slack tide will produce some trophy-sized “humpbacks”. It’s important to continue to move from structure to structure to find these beautiful and awesome eating fish. Remember, **CT black sea bass regulations are as follows...15 inch min. length, 5 fish daily limit from May 1st to December 31st.** Berkely Gulp (swimming mullet) on a jig along with squid with a spinner works great for these “Bucketmouths”.

SCUP (porgy) fishing is very good by Orient Point and the north shore bays. Much better in Gardiners Bay and the Peconics (Little Peconic Bay is very good). Time to plan a trip on the many wonderful party/charter boats in CT. [CT Party Boat Association](#). Fishing is much better in Gardiners Bay and the Peconics. Porgies measuring 12-16 inches (“hubcap size”) have been reported! Porgy fishing has also been reported at these shore fishing locations: Rocky Neck State Park, Meigs Point Hammonasset State Park and Fort Trumbull State Park. Locate your favorite [Enhanced Shore Fishing Opportunities](#) for these excellent eating “Reef Slammers”. These “panfish of the sea” are easily caught on sandworms/cut squid or any other small piece of bait. Contact your [local bait and tackleshop](#) for updated fishing information.

WEAKFISH look for these awesome eating fish in Guilford/New Haven Harbor over to the Milford/Stratford area, West Haven sand bar has good reports along with the Peconics (NY).

BLUEFISH The Race, Millstone Outflow, Plum Gut and the north side of Long Island including Gardiners Bay and the Peconics are the early season hotspots.

STRIPED SEAROBIN fishing is good in LIS for this “hardhead fish with spines and large pectoral fins”. These beautiful and strange looking fish are now very common especially when bottom fishing at many of Connecticut’s shore fishing sites. With many fish measuring over 20 inches, 3 pounds and “barking up a storm” (grunting noise they make when handling them). They love sandworms, squid and any live or dead bait. They are also very good to eat. Please be careful when handling them...be mindful of their spines located on top of their head and gill cover.

HICKORY SHAD fishing is fair in the lower Connecticut River by the DEEP Marine Headquarters fishing pier. Connecticut Tarpon (Hickory shad) can be found mixed in with schoolie striped bass and harbor blues. Flood or Ebb tide is best and lures of choice are a willow leaf (silver), kastmaster (single hook), small plastic jigs (white or chartreuse), and or shad darts in various colors. One day they are here in large numbers...the next day you are left wondering...where did they go.

WHITE PERCH fishing is good to excellent for these tasty panfish in most of the tidal rivers and coves along the Connecticut shoreline. Perch spots include the Pawcatuck River, Mystic River, Thames River, upper

Niantic River, lower Connecticut River (DEEP Marine Headquarters fishing pier), Black Hall River, Lieutenant River, North/South Cove and Hamburg Cove. Shrimp and small worms are the key to success.

For Current Connecticut Recreational Fishing Regulations: Anglers should consult the 2017 Connecticut Anglers Guide which is now available at most Town Clerks Offices, DEEP offices and at tackle stores selling fishing licenses. Current regulations, electronic versions of the Angler's Guide and additional information can all be accessed on the DEEP website at: www.ct.gov/deep/fishing.

PLEASE CALL 1.800.842.4357 TO REPORT FISHING VIOLATIONS.

The Connecticut Department of Energy and Environmental Protection is an Affirmative Action/Equal Opportunity Employer that is committed to complying with the requirements of the Americans with Disabilities Act. Please contact us at (860) 418-5910 or deep.accommodations@ct.gov if you have a disability and need a communication aid or service; have limited proficiency in English and may need information in another language; or if you wish to file an ADA or Title VI discrimination complaint.

DEEP WEEKLY Fishing Report



**Connecticut Department of
ENERGY & ENVIRONMENTAL PROTECTION**

79 Elm Street, Hartford, CT 06106
www.ct.gov/deep